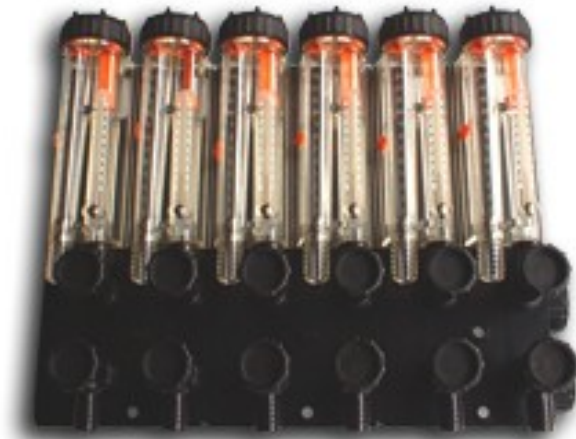




ALW-Liedgens

Flow-Control Type 2000





Flow-Control

Since over 25 years our flow controlling devices have been proved in the best way, by control, for constant cooling on:

Injection moulding machines

Extruders

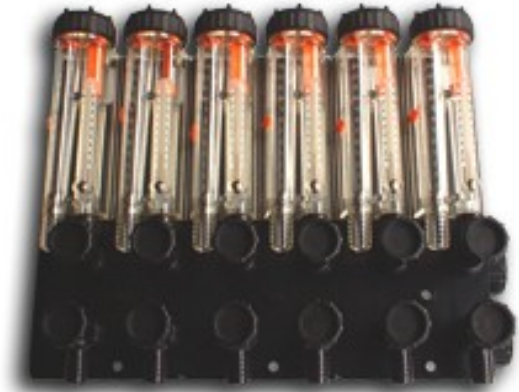
calibration plants

Vacuum Exhaust

welding transformers

welding tongs

hydraulic systems



We offer our flow controlling devices in different versions and sizes for your individual use.

Type 500 flow rate 500 l/h for each automatic control loop

Type 500 with \varnothing 10 & \varnothing 12mm hose connector available (as controlling devices up to 16x)

Type 500e with \varnothing 10 & \varnothing 12mm hose connector available (as controlling devices up to 16x)

Type 500 with absorption block R $\frac{1}{2}$ "internal threads.

Type 2000 flow rate 2000 l/h for each automatic control loop

Type 2000 with \varnothing 14 & \varnothing 19mm hose connector available (as controlling devices from 2-10x)



Flow-Control

Type 2000 Model 2000.1

The Type 2000.1 has a regulation in forerun and reverse running and is in series equipped with a $\varnothing 19\text{mm}$ hose connector. The Control Devices are available from 2 up to 10. All water-prominent parts are manufactured from high-quality plastic. The flow rate can be adjusted by sensitive regulating valves very exactly. In the measuring housing ballball balls and capillary thermometers indicate exactly reproducible values.



An adjustable sliding marking in form of an arrow indicates the desired value after an interruption. Easy cleaning. By unscrewing only one cover, the measuring housings can be simply cleaned by means of supplied brush. The connection of our controlling devices amounts to 1 $\frac{1}{4}$ ". Of course our controls are available also as single housings with two hose connectors in

$\varnothing 14\text{mm}$

$\varnothing 19\text{mm}$

Special equipments are possible in context!

Please take all spare parts from the parts catalog.



Flow-Control

Type 2000 Model 2000.2

The Type 2000.2 has a regulation in forerun and reverse running and is in series equipped with a Ø14mm hose connector. The Control Devices are available from 2 up to 10. All water-prominent parts are manufactured from high-quality plastic. The flow rate can be adjusted by sensitive regulating valves very exactly. In the measuring housing ballball balls and capillary thermometers indicate exactly reproducible values.



An adjustable sliding marking in form of an arrow indicates the desired value after an interruption. Easy cleaning. By unscrewing only one cover, the measuring housings can be simply cleaned by means of supplied brush. The connection of our controlling devices amounts to 1 ¼". Of course our controls are available also as single housings with two hose connectors in

Ø14mm

Ø19mm

Special equipments are possible in context!

Please take all spare parts from the parts catalog.



Flow-Control

Type 2000 Model 2000.3

The Type 2000.3 has a regulation in forerun and reverse running and is in series equipped with a Ø19mm hose connector. The Control Devices are available from 2 up to 10. All water-prominent parts are manufactured from high-quality plastic. The flow rate can be adjusted by sensitive regulating valves very exactly. In the measuring housing ballball balls and capillary thermometers indicate exactly reproducible values.



The water connections can be delivered optionally left or right on request.



Flow-Control

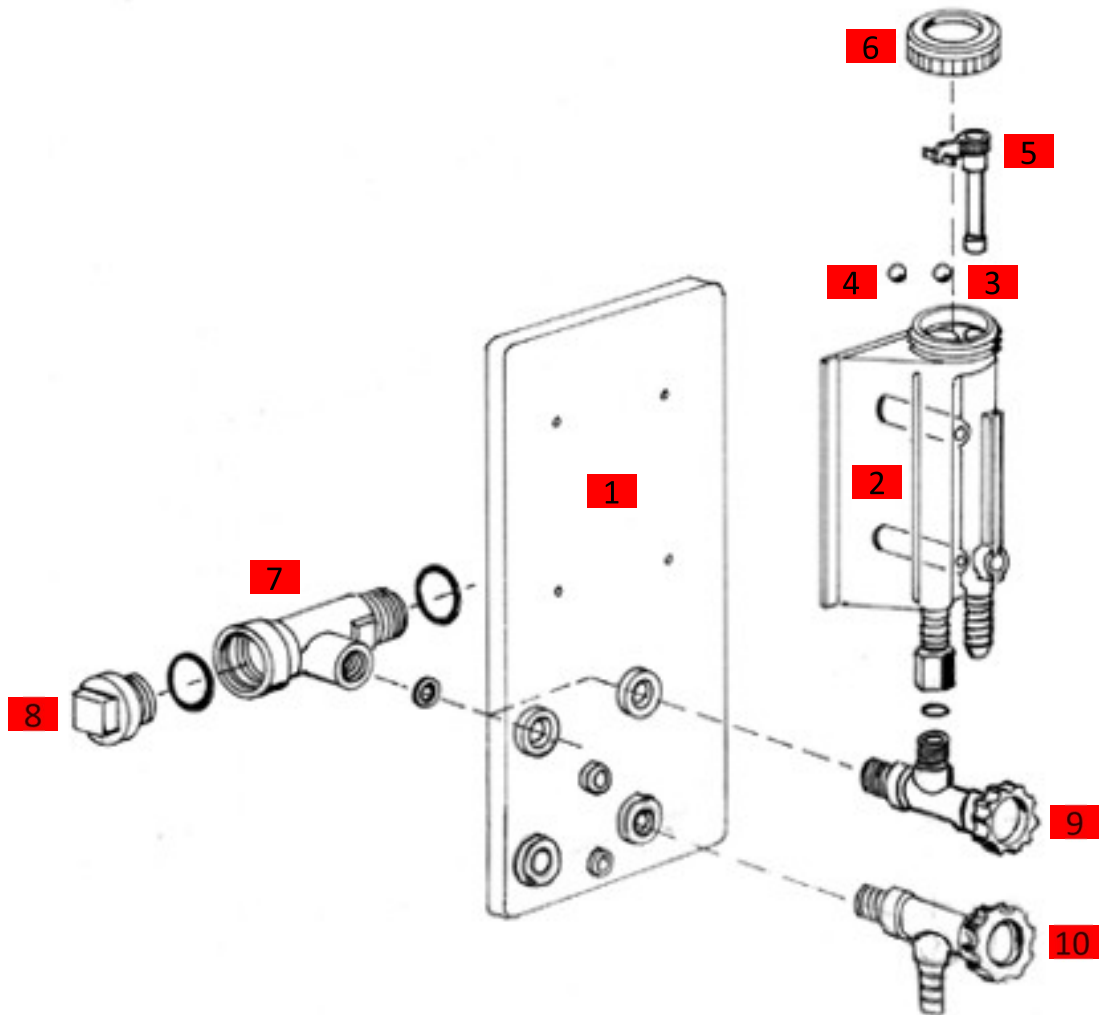
Type 2000 Model 2000.4

The Type 2000.4 has a regulation in forerun and reverse running and is in series equipped with a Ø14mm hose connector. The Control Devices are available from 2 up to 10. All water-prominent parts are manufactured from high-quality plastic. The flow rate can be adjusted by sensitive regulating valves very exactly. In the measuring housing ballball balls and capillary thermometers indicate exactly reproducible values.



The water connections can be delivered optionally left or right on request.

Installation Instructions



- No.1 Mounting plate
- No.2 Measuring housing
- No.3 Steel ball
- No.4 Plastic ball
- No.5 Rotary-wing use
- No.6 Cover
- No.7 Fitting
- No.8 End plugs
- No.9 Valve with chassis connection
- No.10 Valve with hose connection